

# SmartWeight® Pro

*Intuitive balancer with professional features*

**NEW**



# Key features at a glance

*PATENT PENDING*

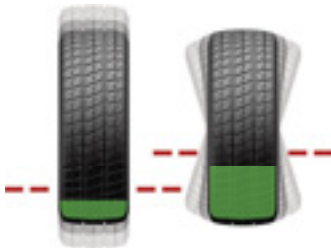
## No-touch wheel measurement



- ✓ Ergonomic design
- ✓ More durable than Dataset® arms
- ✓ Full wheel measurement without contact

*PATENTED*

## SmartWeight® technology



- ✓ Improves balance
- ✓ Minimizes weight usage
- ✓ Maximizes productivity

*STANDARD*

## Intuitive interface



- ✓ Single-knob navigation simplifies experience
- ✓ 3D graphics





*STANDARD, PATENT PENDING*

### **ExactPosition™**



- ✓ Laser exactly identifies weight location
- ✓ Improves balance accuracy
- ✓ More durable than Dataset® arms

*PATENTED*

### **CenteringCheck®**



- ✓ Ensures proper centering
- ✓ Eliminates setup errors and most common cause of comebacks

*OPTIONAL*

### **HammerHead® option**





- ✓ Speeds clip-weight placement
- ✓ Improves balance
- ✓ Illuminates work area

*EXCLUSIVE*

### **On-demand videos**



- ✓ Simplifies training
- ✓ Improves results
- ✓ Multiple languages  

**SWP70** shown with optional BullsEye® collet kit, HammerHead® top-dead-center laser, and wheel lift



*EXCLUSIVE*

### **Space-saving design**

- ✓ Small-format maximizes shop space
- ✓ Hood design allows machine to be installed against wall



# ***No-touch measurement makes balancing easier***

*STANDARD, PATENT PENDING*

## **Easily determine weight placement using laser vision system**

- ✓ Simple dimension entry
- ✓ Automatic weight mode selection
- ✓ Indicates exact weight placement
- ✓ Eliminates most common cause of weight-chasing



*STANDARD*

## **Outer laser vision system**

- ✓ Automatically measure wheel width as hood is lowered
- ✓ Improves balance accuracy



# Achieve the best balance with SmartWeight®

## Save time & effort

- ✓ Single-weight solutions as much as **60% of the time**.
- ✓ Saves labor versus traditional two-weight solutions

## Accommodate many wheel types

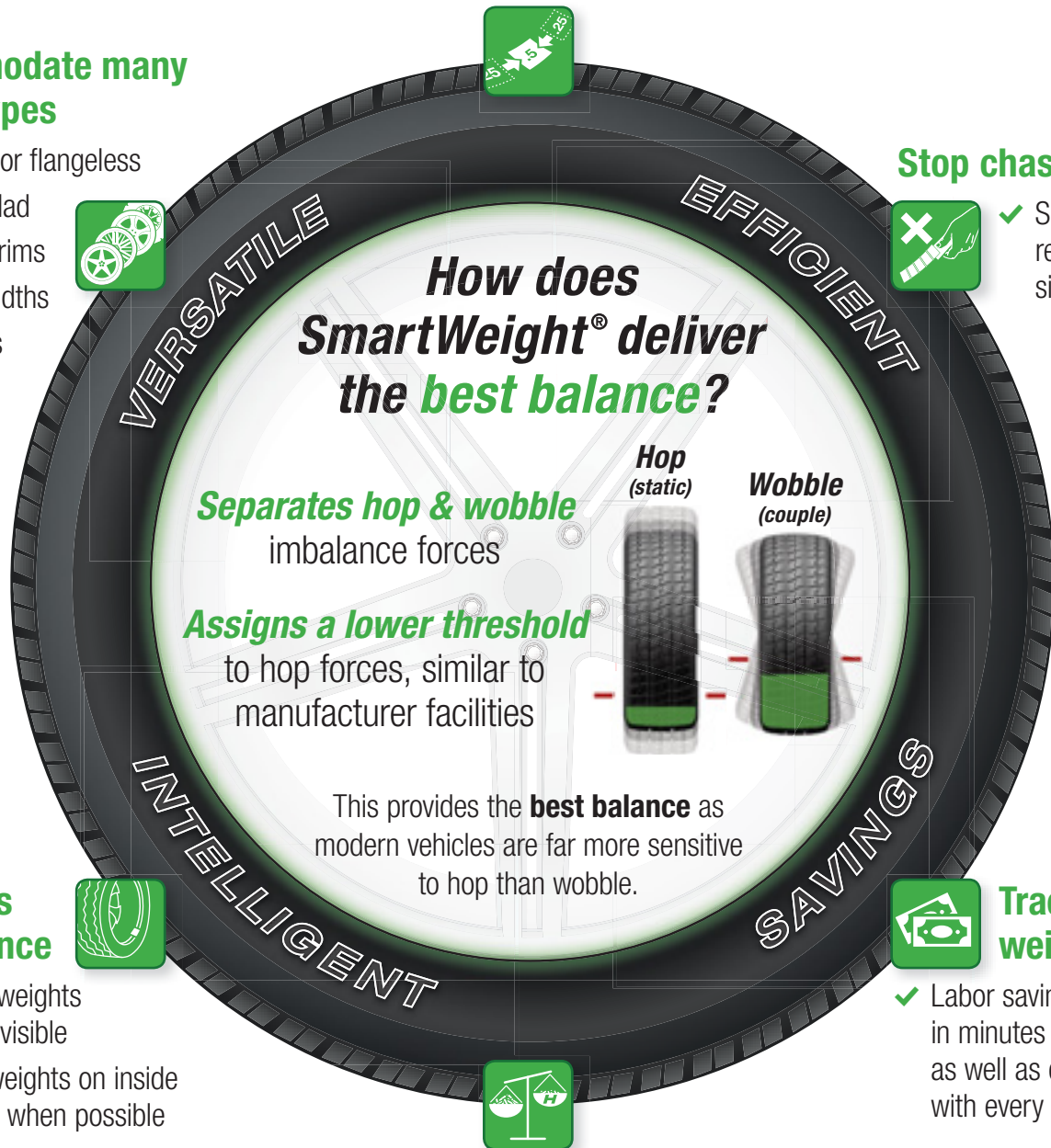
- ✓ Flanged or flangeless
- ✓ Plastic clad
- ✓ Colored rims
- ✓ Wider widths
- ✓ Run flats



## Stop chasing weights



- ✓ Superior balance results in a single spin



## Improves appearance



- ✓ Smaller weights are less visible
- ✓ Places weights on inside of wheel when possible



## Track labor & weight savings

- ✓ Labor savings shown in minutes and hours as well as dollars with every spin.



## Did you know?

Modern vehicles are approximately 4 times more sensitive to hop forces than wobble. Conventional balancers treat both the same.

EXCLUSIVE

# Single-knob interface simplifies experience

0.75oz

Clearly indicates correction weight amount

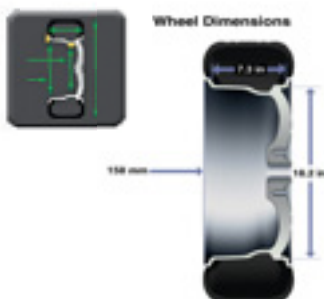


Rim cutaway displays selected weight mode

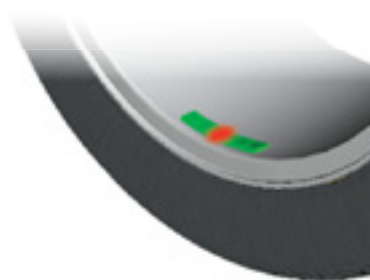


Switch text language

## Balancing interface at a glance



Display rim dimensions

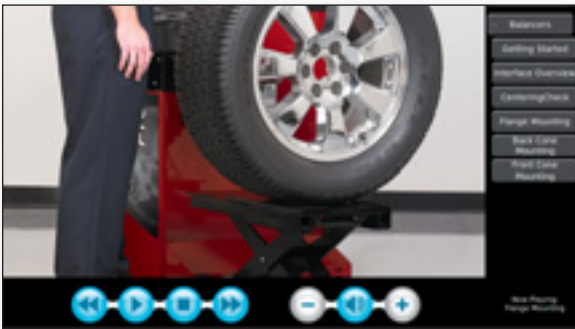


TruWeight® provides lifelike representations of actual correction weights



SmartWeight® panel displays wheel balance condition

# Exclusive software features make balancing easier



## On-screen instruction

- ✓ High-definition videos provide instruction on a variety of balancing topics
- ✓ Covers basic techniques and advanced procedures
- ✓ On-site training for your technicians
- ✓ Multiple languages



## 3D graphics

- ✓ Interactive display guides technicians through balancing procedures.
- ✓ Decreases training time

# Popular equipment upgrades

PATENTED

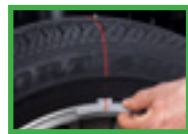
## HammerHead® top-dead-center laser



- ✓ Greater weight placement accuracy
- ✓ More single-spin balances improve productivity
- ✓ Overhead light illuminates work area



✗ Incorrect



✓ Correct



## Ergonomic QuickNut

- ✓ Fast clamping with collapsing jaws
- ✓ Comfort-grip handles



## BullsEye® centering system

- ✓ Optimize centering
- ✓ Prevent wheel damage



## Wheel lift

- ✓ Avoid strain
- ✓ Safely service heavy, oversized wheels
- ✓ Aids wheel centering



## Basic collet kit

- ✓ Handles most common wheel sizes
- ✓ Prevent wheel damage

# Specifications

**Power requirements** 196-256V, 3 amp, 50/60 Hz, 1 ph  
(Power cable includes: NEMA 20 amp plug, L6-20P)

**Air supply requirements\*** 100-175 psi (7-12 bar)

## Capacity

Rim width	1.5 – 20 in. (38 – 508 mm)
Rim diameter	10 – 30 in. (254 – 762 mm)**
ALU	7.5 – 38 in. (191 – 965 mm)**
Max. tire diameter	38 in. (965 mm)
Max. tire width	20 in. (508 mm)
Max. tire weight	135 lbs. (61 kg)

**Imbalance resolution** ± 0.05 oz (1.0 g)

**Placement accuracy** 512 positions, ± 0.35°

**Balancing speed** 150 rpm

**Motor** Programmable drive system and DC motor

\* Wheel lift models only.

\*\* Extreme wheel sizes may require manual data entry.

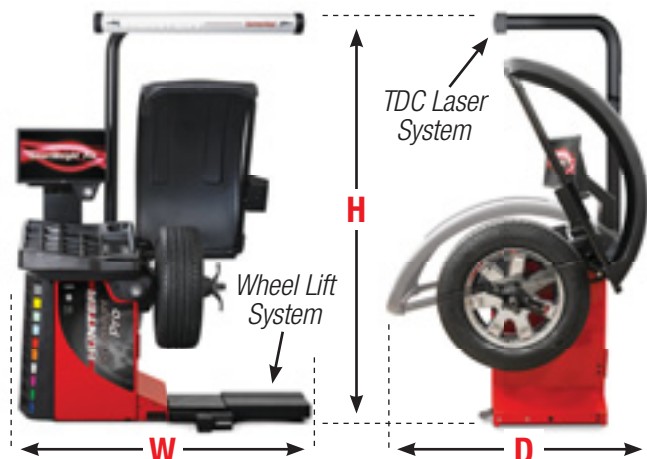


# Models

	SWP78	SWP77	SWP76	SWP70
<b>Wheel lift system</b>	✓		✓	
<b>Outer hood laser</b>	✓	✓	✓	✓
<b>TDC laser system</b>	✓	✓		
<b>Hood</b>	✓	✓	✓	✓
<b>Width (W)</b>	60.5 in. (1536 mm)	57 in. (1448 mm)	60.5 in. (1536 mm)	53 in. (1346 mm)
<b>Height (H)</b>	85 in. (2159 mm)	85 in. (2159 mm)	71.5 in. (1816 mm)	71.5 in. (1816 mm)
<b>Depth (D)</b>	32.75 in. (832 mm)	32.75 in. (832 mm)	32.75 in. (832 mm)	32.75 in. (832 mm)
<b>Weight</b>	429 lbs. (195 kg)	330 lbs. (150 kg)	374 lbs. (170 kg)	275 lbs. (125 kg)

## Optional equipment

- 20-3062-1** Basic collet kit
- 20-2747-1** BullsEye® collet kit
- 76-574-2** Ergonomic QuickNut
- 20-1839-1** Flange plate
- 20-3600-1** 110V Power Kit



0619BH

Copyright © 2019, Hunter Engineering Company.

Because of continuing technological advancements, specifications, models and options are subject to change without notice.

SmartWeight, BullsEye, HammerHead, CenteringCheck, DataSet and TruWeight are registered trademarks of Hunter Engineering Company.

**HUNTER**  
Engineering Company

[www.hunter.com](http://www.hunter.com)

Form 7463-T, 06/19

Supersedes Form 7463-T, 04/19